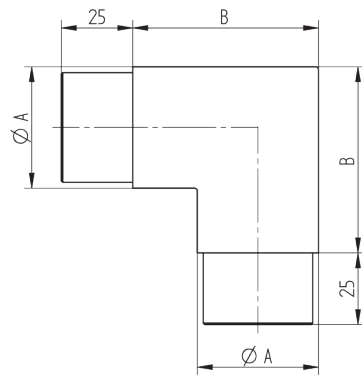
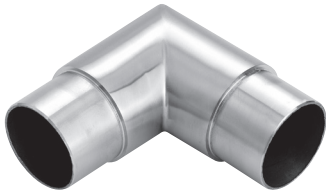


## COUDE ANGLE DROIT



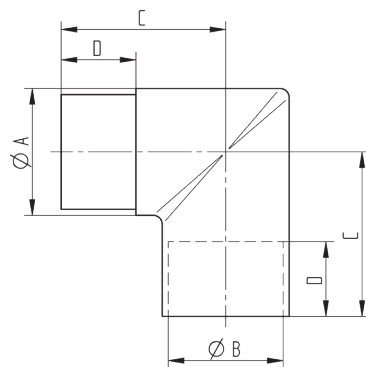
## V2A; AISI 304, brossé

Ø A	B	Réf.
33,7 x 2,0	55	035400
42,4 x 2,0	55	035500
48,3 x 2,0	55	035600
42,4 x 2,0	65	CN4590425

## V4A; AISI 316, brossé

33,7 x 2,0	55	CN4590400
40,0 x 2,0	65	CN4590420
42,4 x 2,0	65	CN4590430
42,4 x 2,6	65	CN4590450
48,3 x 2,0	67	CN4590460
48,3 x 2,6	67	CN4590470
60,3 x 2,0	83	CN4590480

## COUDE ANGLE DROIT

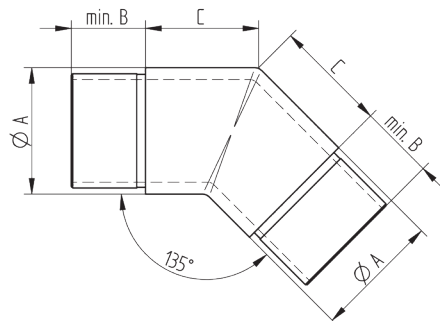


## V4A; AISI 316, brossé

Ø A	Ø B	C	D	Réf.
33,7 x 2,0	29,7	50	25	CN4593100
42,4 x 2,0	38,4	55	25	CN4593200
48,3 x 2,0	44,3	60	25	CN4593300

- coude 90° mâle / femelle

## COUDE ANGLE 135°



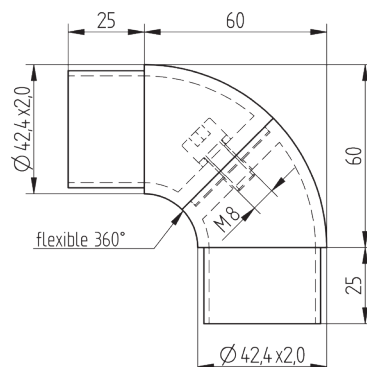
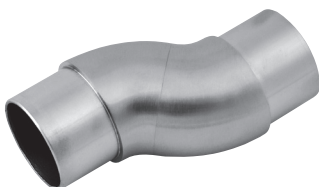
## V2A; AISI 304, brossé

Ø A	min. B	C	Réf.
33,7 x 2,0	17	30	040400
42,4 x 2,0	20	38	040500
48,3 x 2,0	23	43	040600

## V4A; AISI 316, brossé

33,7 x 2,0	25	45	CN4590500
42,4 x 2,0	25	50	CN4590530
48,3 x 2,0	25	50	CN4590560

## RACCORD ORIENTABLE



## V2A; AISI 304, brossé

Ø A	B	C	Réf.
42,4 x 2,0	60	25	015100

## V4A; AISI 316, brossé

33,7 x 2,0	57	25	CN4590600
42,4 x 2,0	67	25	CN4590620
42,4 x 2,6	67	25	CN4590630
48,3 x 2,0	75	25	CN4590640

- coude 3D flexible et orientable à 360°