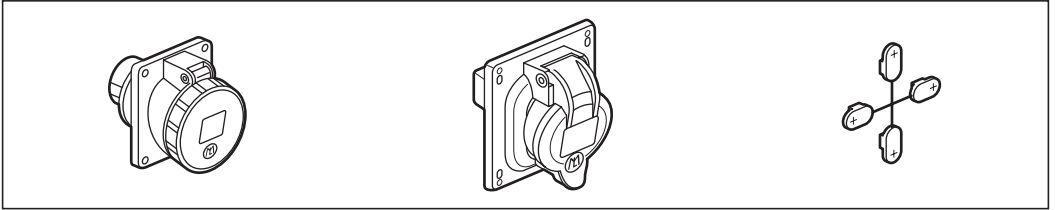
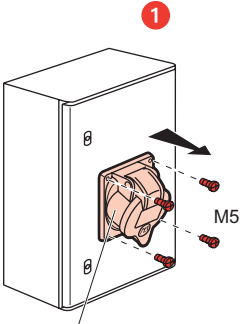
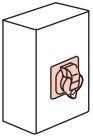


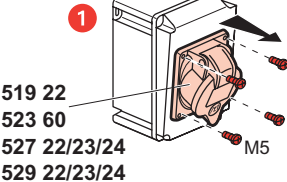
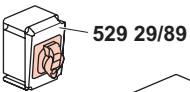
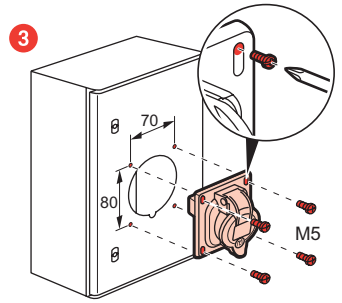
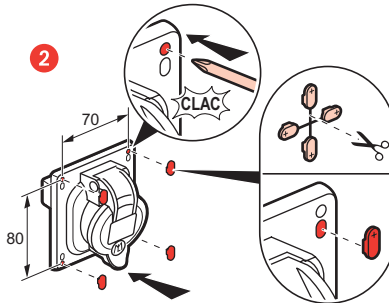
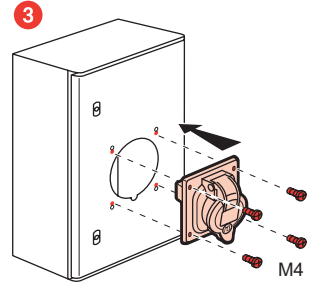
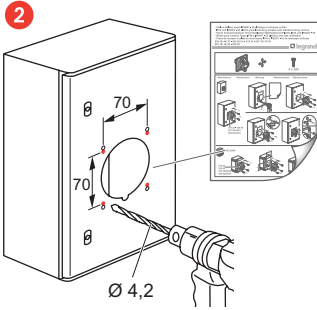
- Socles tableau Hypra IP44 et IP66/67 - 55 plastique à entraxes unifiés
  - IP44 and IP66/67 - 55 plastic panel mounting sockets with standard fixing centres
  - Hypra Anbausteckdosen mit einheitlichem Mittenabstand Plastik, IP44 und IP66/67 - 55
  - Bases para cuadros Hypra IP44 e IP66/67 - 55 plástico con ejes unificados
  - Presa da incasso in plastica serie Hypra IP44 e IP66/67 - 55 ad interasse unificato
- 519 21 - 523 50/59/70/80 - 527 18/19/20 - 529 18/19/20/26  
530 45/46/47/50/51 - 6581 36/37



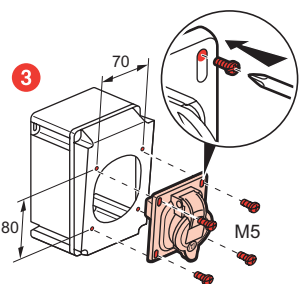
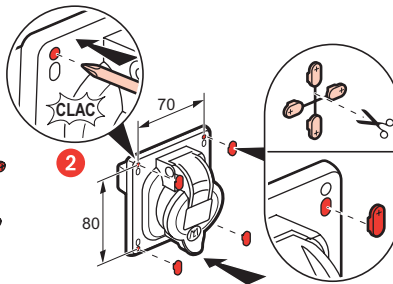
- Maintenance
- Maintenance
- Wartung
- Mantenimento
- Manutenzione



519 22 - 523 60  
527 22/23/24  
529 22/23/24



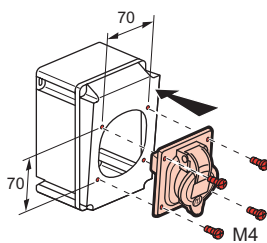
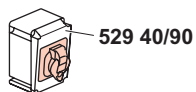
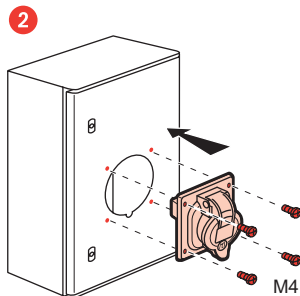
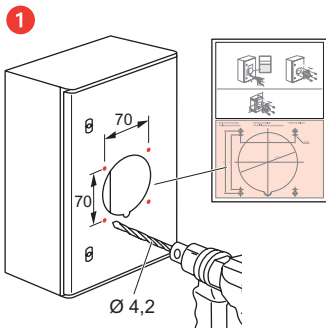
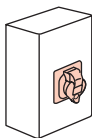
519 22  
523 60  
527 22/23/24  
529 22/23/24



- Installation neuve
- Instalación nueva

- New installation
- Nuova installazione

- Neue Installation



- Gabarit de perçage
- Modelo de perforación

- Boring template
- Profilo limite di perforazione

- Bohrschablone

